

CMI Vacuum Station



www.central-marketing.com

CMI Vacuum Station

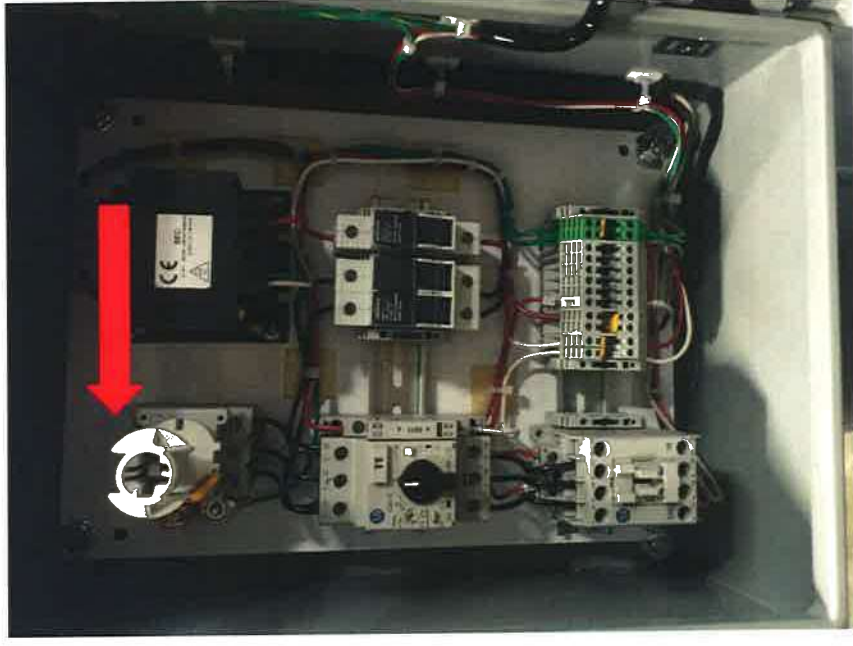
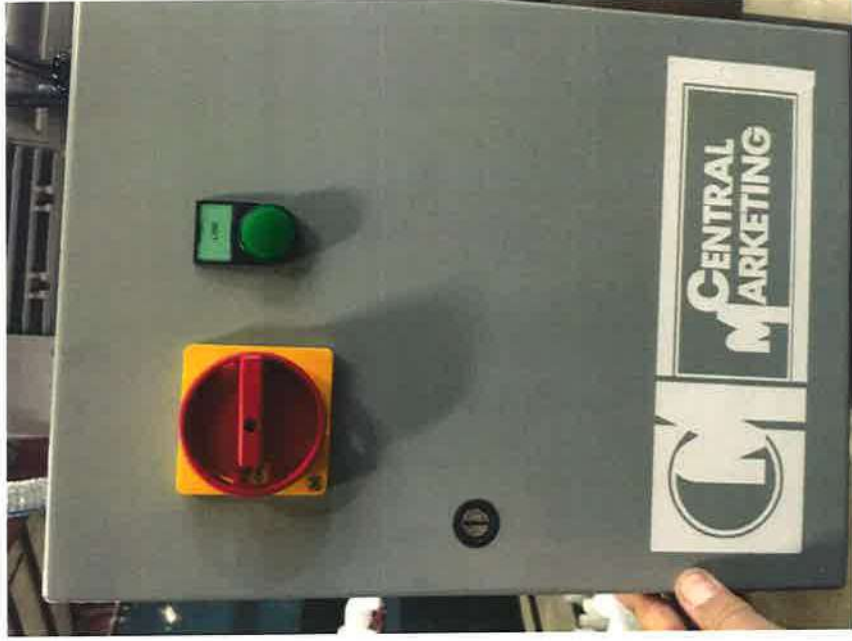
Specifications

- 460 VAC / 3phase / 5amp
- 2HP Wet vein vacuum pump
- 30 gal. reserve tank
- Preset vacuum switch
 - Cut in approx. 20 in/HG
 - Cut out approx. 25in/HG



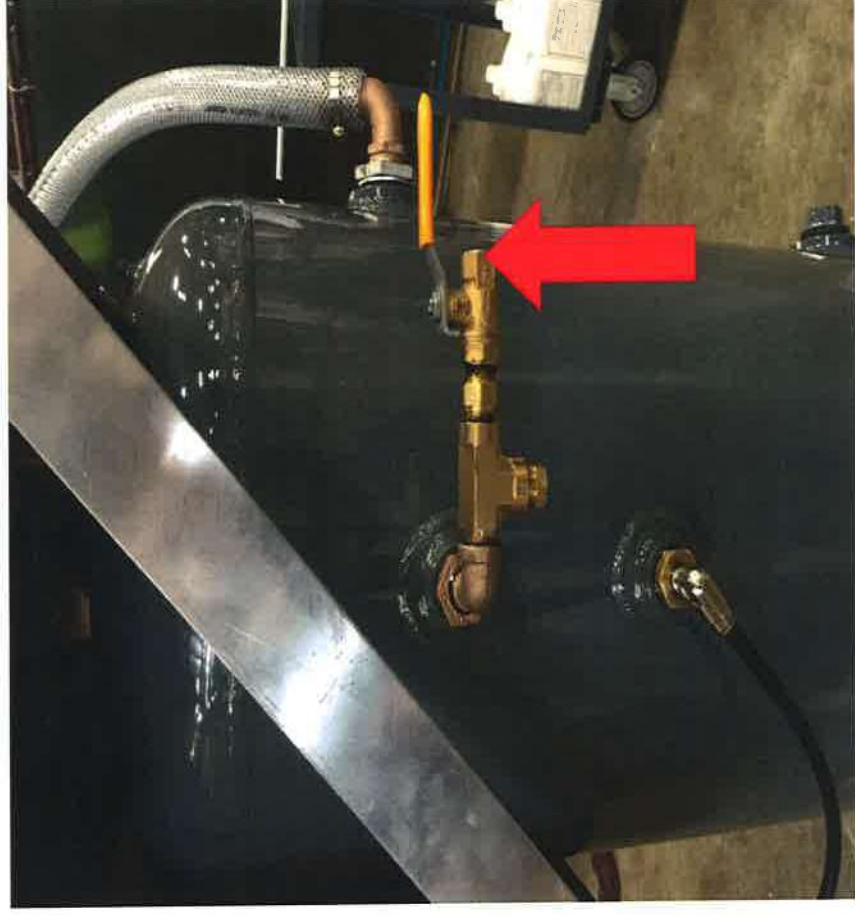
Control Cabinet

Main Power connect at arrow



www.central-marketing.com

3/8 compression connection for vacuum
station to chamber a/o manifold



www.central-marketing.com

Vacuum Filter



www.central-marketing.com

Pre-set vacuum switch w/ gauge



www.central-marketing.com

CMI Vacuum Station Operation

- Connect power to main switch
- Turn power on and check phase (rotation of pump motor)
- Vacuum pump will then run until the vacuum switch is satisfied. When vacuum falls pump will automatically turn back on to maintain a 20-25 in/HG range of vacuum.
- With this system there is no need for extra controls, as we have a vacuum reservoir to store vacuum. The vacuum switch on the station will control the pump to maintain the set vacuum throughout the day.

